

FLEXIBLE PENSIONS

Lessons learned from five years of pensions freedom

ISA FAMILY SHRINKS

The landscape has shifted for younger savers as lifetime ISAs come to the fore

THE GENDER PENSION GAP

More women are saving more for retirement, but there's still a gap



rosan helmsley
WEALTH MANAGEMENT

SPRING 2020

Quarterly Newsletter

Budget 2020 – a Budget for strange days

A look at what's on the horizon for 2020/21



In this issue...

Welcome to our first edition of the new decade. With the COVID-19 pandemic forcing an international shut down of most of everyday life and business, the new Chancellor had no choice but to focus on an emergency Budget and provide a fund for businesses and individuals suffering as a result. However, of course we still need to plan for the future. New data has shown that while women are saving more for retirement, they still have far to go before catching up with men in terms of the value of their pension pots. Salary inequality earlier in life is largely to blame. Elsewhere we look at an important change to overdraft rules from the FCA, prompting high street lenders to hike interest rates to as much as 40%. Gifts between grandparents and grandchildren are also considered from the tax perspective where generosity should be balanced with future needs.

03

Five years of pension flexibility

What are the lessons for those coming up to retirement from half a decade of pensions freedom?

04

Budget 2020 – strange days

Emergency measures dominate, but other changes include the annual pensions allowance charge and entrepreneurs' relief

05

National Living Wage vs new State Pension

One is growing faster than the other, with implications for pension planning

06

Shifts in the savings landscape

With Help to Buy ISAs now withdrawn the focus is on the Lifetime ISA option for younger savers

07

Overcoming the gender pensions gap

Women are saving more, but still lag behind

08

Too generous by half?

Considerations for intergenerational gifting

Cover image: Ann in the UK/Shutterstock.com

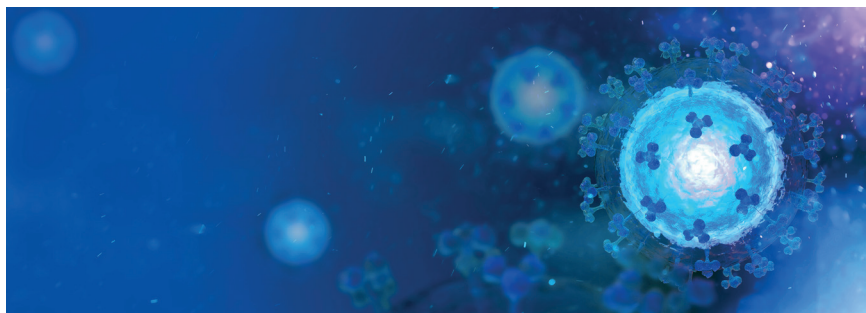
Covid-19 deals major blow to post Brexit euphoria

2020 had seemingly started so well with a post-election energy and optimism that saw a new Conservative government with a substantial working majority for the first time in over a decade. The new government was planning an ambitious new agenda aimed at bringing the country together around policies based on social justice and sensibly considered economic reform.

There was hope that Boris and team would negotiate a sensible new trade agreement with the EU that would frame the UK's journey into a new era of greater independence, around law, borders and trade. Markets around the world generally traded up in January on the hope of continuing global economic prosperity, albeit against a backdrop of slowing global GDP. What a difference a month can make.

The coronavirus Covid-19 has dealt a blow to global expansion that may well last a number of years and will most certainly shape how we consider personal, corporate and government thinking for decades ahead. The impact on the markets was brutal with the fastest declines in history for the S&P 500 and the FTSE 100, leaving investors and market practitioners shocked. As I write, markets are showing some resilience with a decent bounce off their lows as evidence of a slowing number of cases and deaths in Italy and Spain emerges. There is some early evidence that our own coronavirus figures are beginning to slow too.

We remain in lockdown and it will now be a tough judgement for government to decide precisely when we get the healthy and majority of the population back to work to avoid the much greater potential risks to our long term health and wealth of remaining in this shut down state for too long. We continue to write weekly articles on the web site under the coronavirus drop down on the home page to convey our thoughts and perspectives through this period.



Coronavirus Covid-19 is causing health and economic chaos on a truly global scale

This week marks the start of a new financial year, and for those with cash positions already in invested wrappers or cash in bank accounts awaiting new investment, there is going to be a big investment opportunity going forward. We will of course get through this period and though there are going to be obvious challenges ahead, the current situation offers a great opportunity for investors looking forward over the next three to five years plus. Averaging in investments also allows some of the short-term recent reductions in values to be mitigated if future performance is strong from here.

Despite the general trend in reducing the number of tax efficient investment schemes over recent years, it is still possible to shelter large sums each year in government approved regulated investment schemes. This includes £20,000 per annum in ISAs, £40,000 in pensions, £200,000 in VCTs and £1,000,000 in EISs.

Pension investments allow tax relief at marginal tax rates and VCTs and EISs allow 30% tax breaks on the investment, providing some sensible downside protection on these higher risk based investments. Please do contact us if you wish to act early in this financial year to secure new investments and take advantage of the current market levels.

This newsletter contains a number of articles on current topical industry and financial planning issues. Please do contact us if you wish to review any of the articles, or individual investment portfolios.

Rob Sandwith | Chief Executive

PENSIONS

Lessons from five years of pension flexibility

It's been five years since pension holders were given the freedom to draw directly from certain pension savings. What have we learned that can help those about to embark on their own retirement journey?

The pension reforms in April 2015 gave defined contribution pension holders "complete freedom to draw down as much or as little of their pension pot as they want, anytime they want," according to the Chancellor of the time. After five years of experience in the UK – and many more in places like the US and Australia that have had similar rules for longer – we can draw some conclusions about the changes, and derive some lessons for the future.

Despite the sceptics' almost immediate warnings that pension pots would be frittered away on Lamborghinis or world cruises, leaving the State to pick up the pieces, it has not worked out that way. After an initial rush to fully encash pension pots, the average amount withdrawn per person quickly declined. By the final quarter of 2019, nearly four times as many people were receiving flexible payments as in the second quarter of 2015, but the average payment had fallen by almost two thirds.

The relatively stable pattern of average withdrawals over the last three years suggests that the gloomy forecast of spendthrift pensioners was wrong. However, there has been a continued decline in the purchase of annuities to provide retirement income.

The latest data from the Financial Conduct Authority (2018/19) shows just 11% of pension plans being used to buy an annuity.

DRAWDOWN PROS AND CONS

If you are at the stage when you are beginning to consider your retirement, there are some lessons to learn from half a decade's experience of pension drawdown:

- A full withdrawal can make sense for small pension pots, even though 75% of the amount received is subject to income tax under PAYE. As the pot size increases, income tax and the operation of PAYE become bigger issues. Full withdrawals account for nearly 90% of payments from plans valued below £10,000, but for only about 1% of pots of more than £250,000.
- Flexi-access drawdown is by far the most popular means of drawing from pension plans valued at £100,000 or more. However, it is probably still too early to say whether those who choose this option without taking professional advice are making a sustainable level of withdrawals.
- Flexibility in law may not mean flexibility in reality for your pension plan. Many providers



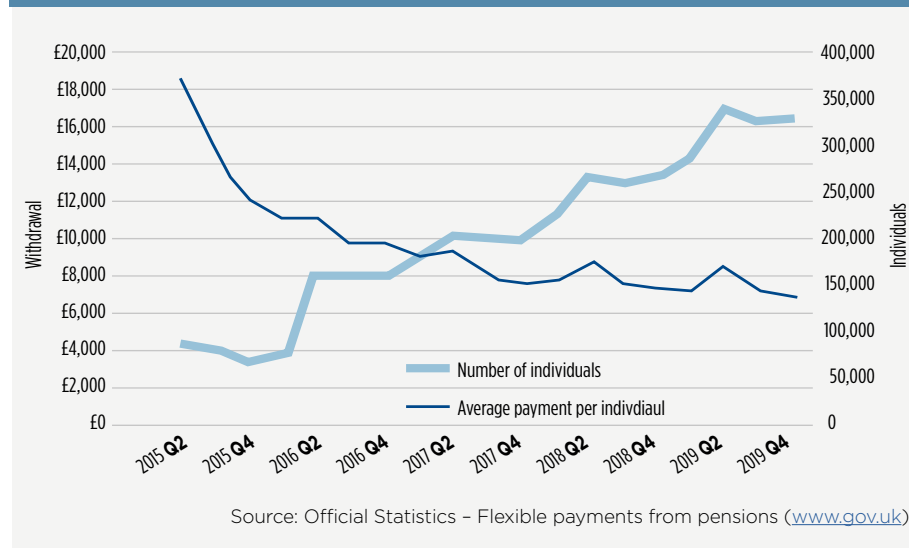
of large group schemes, and insurers with pre-2015 pension policies, decided not to offer all the options that legislation permits. In some instances, the only flexibility is the ability to withdraw in full. If you find yourself with such a plan, you may wish to seek advice about transferring to a more flexible arrangement.

Whatever decisions you make about managing your retirement income, it's a complex area. To make sure you understand your options clearly, it is imperative that you seek expert advice.

✚ *The value of your investments and the income from them can go down as well as up and you may not get back the full amount you invested. Past performance is not a reliable indicator of future performance.*

Occupational pension schemes are regulated by The Pensions Regulator.

FLEXIBLE PENSION PAYMENTS



Budget 2020 – a Budget for strange days

The first Budget of 2020 may be the most unusual for years.



The UK somehow survived 2019 without a Budget. Finally, on 11 March the new Chancellor, Rishi Sunak, presented a postponed Budget, the first of two due this year. But it was against a vastly different backdrop from what had been expected as recently as a month earlier.

COPING WITH COVID-19

This was primarily an emergency Budget, focused on a “temporary, timely and targeted” response to the global economic shock from the Covid-19 pandemic. The emphasis on crisis handling was underlined by a coordinated 0.5% cut in the official Bank Rate made by the Bank of England a few hours before Mr Sunak rose to his feet. The Chancellor announced a range of measures aimed at alleviating the disruption to individuals and businesses over the coming weeks and months, including business rate cuts and extensions to statutory sick pay.

Nevertheless, the Chancellor could not completely ignore the legislative backlog that had built up because of the earlier delay.

Alongside £12bn of Covid-19 measures, there were some limited longer-term announcements:

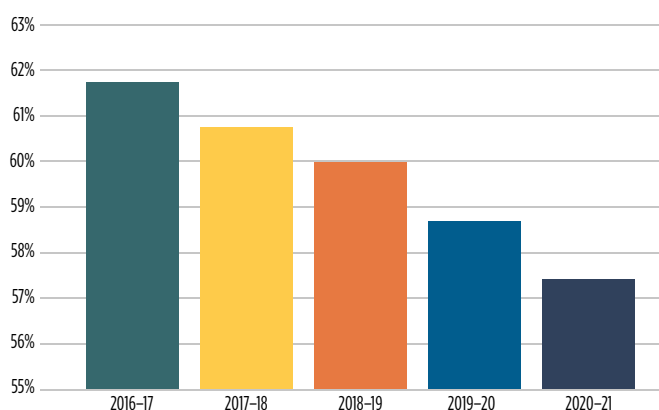
- The rules were eased for tapering the pensions annual allowance charge for 2020/21 onwards. Both the key trigger limits, the threshold income and adjusted income, were increased by £90,000. So, broadly speaking, if your total net income before tax (excluding pension contributions) is not more than £200,000 in 2020/21, your annual allowance will not be subject to the taper. However, if you are still caught by the rules, your minimum annual allowance could fall from £10,000 to as little as £4,000.
- The other main pensions allowance, the lifetime allowance, rises in line with inflation to £1,073,100 for 2020/21.
- The entrepreneurs’ relief lifetime limit for gains has been reduced to £1,000,000 from £10,000,000, taking it back to its original level when the relief was originally introduced 12 years ago.
- The starting point for employees’ and self-employed national insurance contributions (NICs) will rise from £8,632 to £9,500, providing a NIC saving of up to around £104 a year. However, the corresponding employer threshold will rise to only £8,788 in 2020/21.
- The personal allowance and higher rate threshold were both left unchanged, although some of the minor income tax allowances were increased in line with inflation. Earlier in the year, the Holyrood Budget kept the Scottish higher rate tax threshold unchanged for 2020/21 at £43,430, £6,570 below the level for the other parts of the UK.
- The rate of corporation tax stays at 19%, instead of falling to 17% as was previously planned. This non-move generated the largest source of additional tax revenue in the Budget.
- The Junior ISA and Child Trust Fund contribution limit was more than doubled to £9,000 per tax year. However, other ISA limits were once again left unchanged.

PENSIONS

National Living Wage versus the new State Pension

One is growing much faster than the other...

NATIONAL LIVING WAGE AS A PROPORTION OF STATE PENSION



Source: www.gov.uk/national-minimum-wage-rates

The new State Pension has failed to keep up with the National Living Wage in the years since they were both set up in April 2016.

The National Living Wage (NLW) and the new State Pension (NSP) both began in April 2016. Each aims to set an income floor – the NLW during working life and the NSP from State pension age. You might therefore expect their values to be closely related, but that has not turned out to be the case.

- The NLW has risen by 21.1% since 2016.
- The rate was originally set at £7.20 an hour, equivalent to £252.00 a week for a 35-hour week.

■ For 2020/21, the rate is £8.72 an hour, which is equivalent to £305.20 a week.

■ In contrast, the pension increased by only 12.6% over the same period – starting at £155.65 a week in 2016 and rising to just £175.20 by April this year.

Viewed another way, the NSP was 61.8% of the 35-hour week NLW in April 2016, while four years later it will be 57.4%. That difference will probably widen by 2024, with the government objective to raise the NLW even further.

These numbers are further proof that you will need to supplement your State pension with your own savings if you want a reasonably comfortable retirement.

- Amendments to the rules regarding top slicing relief of life insurance policy gains.
- The capital gains tax annual exempt amount was increased to £12,300.

EXPECTED CHANGES OVERLOOKED

Several announcements had been expected but did not appear in the Budget. These included the reform of inheritance tax and a general restructuring of the pension tax rules. These gaps might be filled later this year in the autumn Budget.

If you need any information on how the changes announced in the Budget could affect you or actions you should consider before the next Budget, please contact us.

✚ *Levels and bases of taxation and tax reliefs are subject to change and their value depends on individual circumstances.*

Tax laws can change. The Financial Conduct Authority does not regulate tax advice.





SAVINGS

Shifts in the savings landscape

Government incentives to save – like ISAs – are valuable, but recent changes to the savings landscape have opened up new opportunities while closing down some old ones.

If you are aiming to buy your first home, investing in a Lifetime ISA (or LISA) could be a great help. The recent withdrawal of the Help to Buy ISA in December 2019 means that the LISA is now the only tax-incentivised savings plan for first-time buyers. Anyone who had already taken advantage of the Help to Buy ISA during the four years it was available can continue to contribute to it until November 2029.

You must be between the ages of 18 and 40 (inclusive) to open a LISA, and qualifying savers can invest up to £4,000 per tax year. Like other cash ISAs, it grows free of tax, but they also benefit from a 25% government bonus. This is added to the contributions – so for every £4,000 invested, the government adds another £1,000. Once you turn 50, however, you will not be able to pay into the LISA or earn the 25% bonus. This bonus is a major advantage of LISAs compared with the Help to Buy ISAs, where the bonus was capped at £3,000.

BEWARE OF PENALTIES

The trade-off, however, is a withdrawal charge if you cash-in or withdraw from your LISA before age 60 and you are not using the funds to buy your first home (there is an exception for those who are terminally ill).

The charge is 25% of the amount withdrawn, which recovers the government bonus and applies an extra charge to the original savings. This can be a trap for savers, who could actually end up with less than they paid in, if their circumstances change and they need early access.



The trade-off for the generous LISA benefits is a potential withdrawal charge of 25% of the amount withdrawn, which can be a trap for young savers.

CHILD TRUST FUNDS MATURE

For even younger savers, the first Child Trust Fund (CTF) accounts reach maturity in September 2020. Launched in 2005, the government contributed for children born between 1 September 2002 and 3 January 2011, when the scheme was closed.

New regulations will ensure that the freedom from UK income tax and capital gains tax will continue once the CTF has matured at age 18, even if no action is taken by the now adult account holder.

Both the maturity of CTFs and the complex LISA rules serve as reminders that financial advice is important wherever you are on your savings journey.

✚ Levels and bases of taxation and tax reliefs are subject to change and their value depends on individual circumstances.

The Financial Conduct Authority does not regulate tax advice. Tax laws can change.

PENSIONS

Overcoming the gender pensions gap

Women are saving more than ever into pensions, but they still lag behind men in retirement savings.

The good news is that the proportion of women who are now saving for their retirement has increased, along with their level of contributions, according to a recent report from pension provider Scottish Widows, which has tracked women's pensions for the last 15 years.

Most of us are familiar with the gender pay gap. The idea of a "gender pension gap", which sees women retire on far smaller pensions, is less well known. Although it is narrowing, equality is a long way off. Scottish Widows found that while 57% of women were now saving enough for their retirement, self-employed women and those in lower earnings brackets remain under-prepared for their retirement. Men are still saving more and benefiting generally from an additional £78,000 in their pension pot at retirement.

WHY IS THERE A PENSIONS GAP?

The main cause of the pension gap, unsurprisingly, is the pay gap. Women, on average, still earn less than men. Most people pay a fixed percentage of their earnings into a workplace pension, so this means less money is being invested for women's retirement.

The fact that women are more likely to work part-time, or to take time out to look after young children or elderly parents, exacerbates the problem. Other life events, like divorce, can also impact negatively on women's savings.

At the same time, women typically live longer than men, so if they are to enjoy the same standard of living in retirement, they ideally need larger pension pots – not smaller ones.

HOW TO BOOST YOUR PENSION SAVINGS

Some strategies can help bolster women's savings options:

Maximise your savings: Join a workplace pension – your contributions are boosted by tax relief and contributions from your employer, which may increase if you pay in more. If you are self-employed, you don't benefit from an employer's contribution, but you can still benefit from tax relief on the money saved into a personal pension arrangement.

Get a pension forecast: Find out what you are likely to

“women typically live longer than men... to enjoy the same standard of living in retirement, they need larger pension pots – not smaller ones

get from your State or workplace pension and when you can take them. If this isn't enough to live on, you should aim to save more each month. The earlier you start, the better.

Don't overlook your partner's pension: Some pensions will pay out to a surviving spouse or partner. If you are not married (or not in a civil partnership) you may need to sign a form to qualify. If your partner has more substantial pensions savings, make sure you aren't losing out on this potentially valuable benefit. Aim to build pension savings in your own name, though, because if you rely on your partner, then you could lose out if the relationship breaks down.

Our advisers can help you review your options.

✦ *The value of your investments and the income from them can go down as well as up and you may not get back the full amount you invested. Past performance is not a reliable indicator of future performance.*

Occupational pension schemes are regulated by The Pensions Regulator.

The Financial Conduct Authority does not regulate tax advice. Tax laws can change.





BANKING

AlessandroBascioni/Shutterstock.com

The 40% overdraft

High street lenders, including HSBC, Santander, Nationwide and Lloyds, are pushing up overdraft interest rates to 39.9%.

In many cases, these rates have doubled, meaning that customers face significantly higher borrowing charges, even if they only dip into the red occasionally.

Banks have increased these rates after new rules will ban them from charging higher rates on unauthorised borrowing with effect from April 2020. So rates are rising on agreed overdrafts to make up for this lost revenue.

If you use overdraft facilities you should check with your bank whether other forms of borrowing may be more cost effective for you. For example, the average credit card levies an interest rate of around 20%, similar to the previous overdraft charges, but the exact rate charged depends on individual credit scores.

Alternatively, take a closer look at spending and saving habits. If you are considering alternatives such as long-term loans, it is wise to seek advice before committing.

ESTATE PLANNING

Too generous by half?

Younger family members are increasingly supported by generous grandparents, but intergenerational gifting needs to take potential benefits, and pitfalls, into account.

A third of millennial homeowners have received financial help from their grandparents of an average £7,400, according to a survey from mortgage brokers Trussle. Meanwhile, research by equity release provider Key found that 15% of grandparents had contributed towards their grandchildren's higher education, with another 20% planning to do so over the next decade.

For the younger generation, steep education and housing costs mean these gifts can help them reduce debt and qualify for a mortgage. But there may also be tax advantages for grandparents from these generous intergenerational arrangements.

If you have more substantial assets, you may wish to mitigate your future inheritance tax (IHT) bills. Estates worth more than £325,000 are taxed at 40%, although married couples (and civil partners) can pass on £325,000 each, tax free, with possible additional allowances for the family home.

After the rapid increase in property values in recent decades, many families may be looking to reduce any IHT liability. Giving away assets to family members while you are still living can be an effective way to do this.

BALANCED GIFTING

There are various rules to consider. The simplest option is to make gifts from regular

income, or to limit them to a maximum of £3,000 a year per donor. These will be disregarded by HMRC when it comes to calculating future IHT.

If you are thinking of giving away larger amounts, you would have to live for a further seven years for your gifts to escape the IHT net. This rule is to stop people simply giving away assets on their deathbed to avoid paying tax. If you were unfortunate enough to die within seven years of making a large gift, its full value will be included in your taxable estate. There is a taper relief that may reduce any tax payable on the gift, were you to die between three and seven years of making it.

Before you make any substantial gifts, however, make sure that your own financial future is

secure. People are generally living longer and you may need

additional finances

later in life to

help pay for

care. To avoid

future family

arguments, it's

best to be clear

about what you

are giving and why,

and how any gifts might

impact on future legacies. Estate

and IHT planning can be complicated, so it is best to seek specialist advice.

✚ *Levels and bases of taxation and tax reliefs are subject to change and their value depends on individual circumstances.*

The Financial Conduct Authority does not regulate tax advice. Tax laws can change.



rosan helmsley
WEALTH MANAGEMENT

Rosan Helmsley Ltd, 1000 Cathedral Square,
Cathedral Hill, Guildford, Surrey, GU2 7YL

01483 90 40 40 | www.rosan-ifa.com

Rosan Helmsley Ltd is authorised and regulated by the Financial Conduct Authority (FCA).