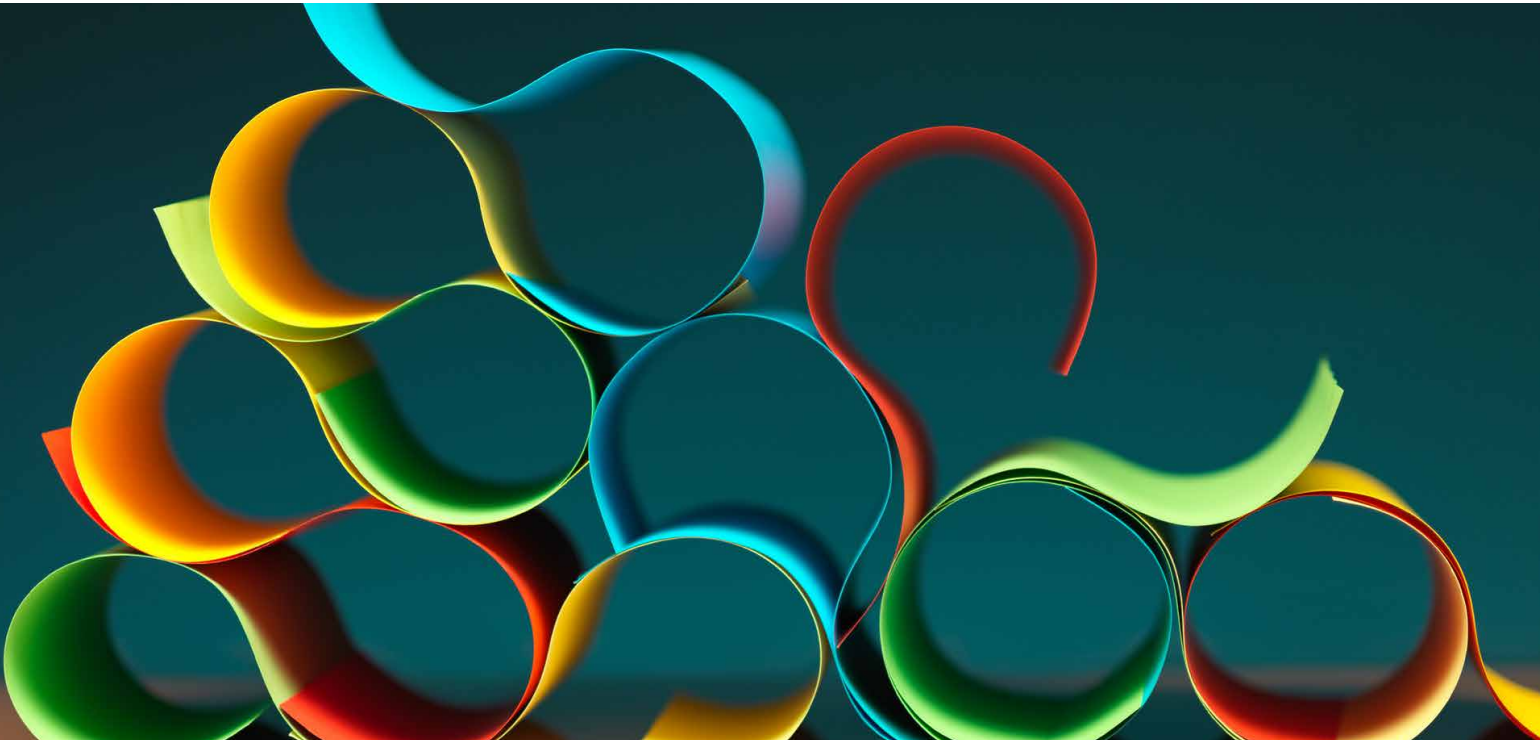




rosan helmsley
WEALTH MANAGEMENT



KEY GUIDE | JULY 2022

Investment planning and asset allocation

Introduction

Investment planning is the process of matching your financial goals and objectives with your financial resources. Technology, ever-increasing investment opportunities and regulations all continue to change. But has your investment strategy kept pace?

Investment planning and asset allocation is a multi-stage process. The actual execution of investment transactions is virtually instantaneous, but the decisions behind them need time and should not be hurried. There are many different approaches to the investment planning and asset allocation process, but most will broadly follow the step-by-step framework explained in this guide.

Contents



UNDERSTANDING RISK

How knowing your attitude to risk should be an integral part of your investment strategy



HOW TO PICK AN INVESTMENT FUND

What you should consider when picking a fund to invest in



ASSET ALLOCATION

Asset allocation is arguably one of the most important factors for generating returns



STRUCTURING YOUR INVESTMENTS

Once you have an investment plan, you should choose your tax structure and investment platform

This publication is for general information only and is not intended to be advice to any specific person. You are recommended to seek competent professional advice before taking or refraining from taking any action on the basis of the contents of this publication. The Financial Conduct Authority (FCA) does not regulate tax advice, so it is outside the investment protection rules of the Financial Services and Markets Act and the Financial Services Compensation Scheme. This publication represents our understanding of the law and HM Revenue & Customs practice as at 1 July 2022.

When should you review your plans?

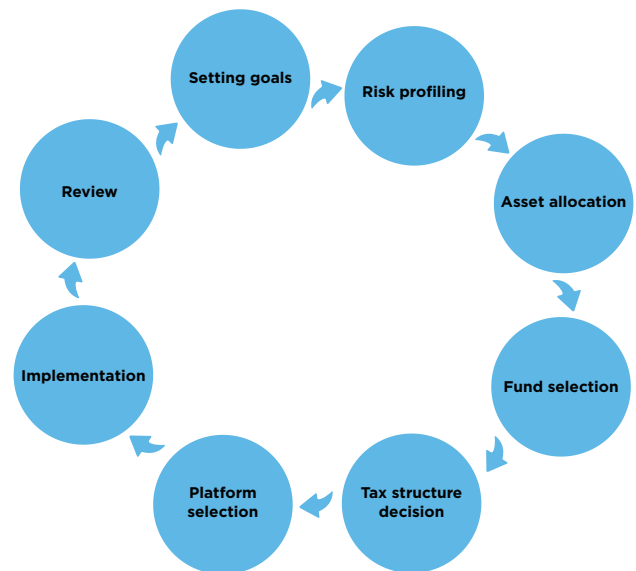
Your investment plans would probably benefit from careful examination if:

- Your investment holdings have not been reviewed in the past year.
- Your financial objectives have changed since your holdings were last reviewed or are likely to do so in the near future.
- You are still holding funds that you bought more than ten years ago.
- You have inherited investments that were simply added to your portfolio without review.
- The investments underpinning your pension arrangements have not been considered in setting your investment strategy.
- One or more of your investments has performed particularly well or very badly, which can create an imbalance in your overall portfolio.

Planning point

The investment planning process will help you understand your investment plans and regularly track their performances. So, it is worth taking the time to understand how it works.

Key points in the investment planning and asset allocation process



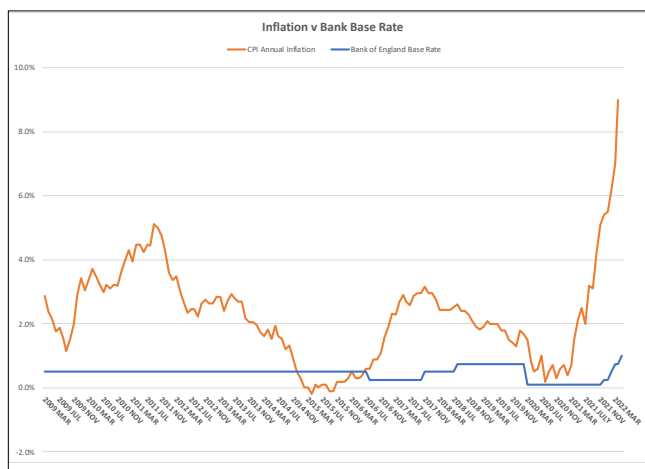
A FEW WORDS ABOUT RISK

Risk is at the heart of many investment decisions and, as the diagram above shows, it is typically at the starting point of the investment planning process. There could be several types of risk in any investment. Helping you to understand the risks is a key responsibility of your investment adviser. You should never be in the position of saying 'I didn't know that could happen'.

For example, putting cash in a bank or building society provides security of the capital and (usually) a small amount of interest. But even the 'safety' of deposits can be compromised

by a bank failure, as events since the financial crisis of 2007 made all too clear. Another risk for deposits, now becoming all too clear, is inflation. Over the years, this has often negated most or all of the interest earned, once tax is taken into account. The eroding effect of inflation is particularly relevant now because:

- Deposit rates remain at historically low levels – the Bank of England base rate is now just 1.25% (following a second rise in June 2022), having previously oscillated between 0.1% and its current level since a series of emergency cuts to 0.5% in March 2009. For nearly all the period since then, inflation has been higher than base rate. In June 2022, the Bank of England said it expected inflation be ‘over 9% during the next few months’ and ‘rise to slightly over 11% in October’ as the energy price rises kick in.
- Until the second half of 2021, the global economic disruption caused by the Covid-19 pandemic had meant that a rapid rise in rates looked unlikely in most developed economies. Indeed, early last year the Bank of England asked the banks to establish procedures to cope with negative rates. However, the picture has since changed dramatically and by May 2022 growing inflationary pressures had prompted the Bank of England to raise the interest rate four times, at consecutive meetings.



Source: Bank of England and Office of National Statistics 2022

One risk that has been all too apparent in recent times is political risk, with markets responding rapidly to reports from

Ukraine and Russia, just as they did a few years ago to tweets from Donald Trump. In the long run, much instant market reaction is best ignored as little more than background noise.

In theory, the higher the investment risk you are prepared to accept, the greater your *potential* returns. However, a higher return from higher risk is not a certainty; if it were, there would be no risk. While the process of portfolio construction now includes sophisticated strategies to reduce risk, as recent events have shown, it cannot be eliminated.

Planning point

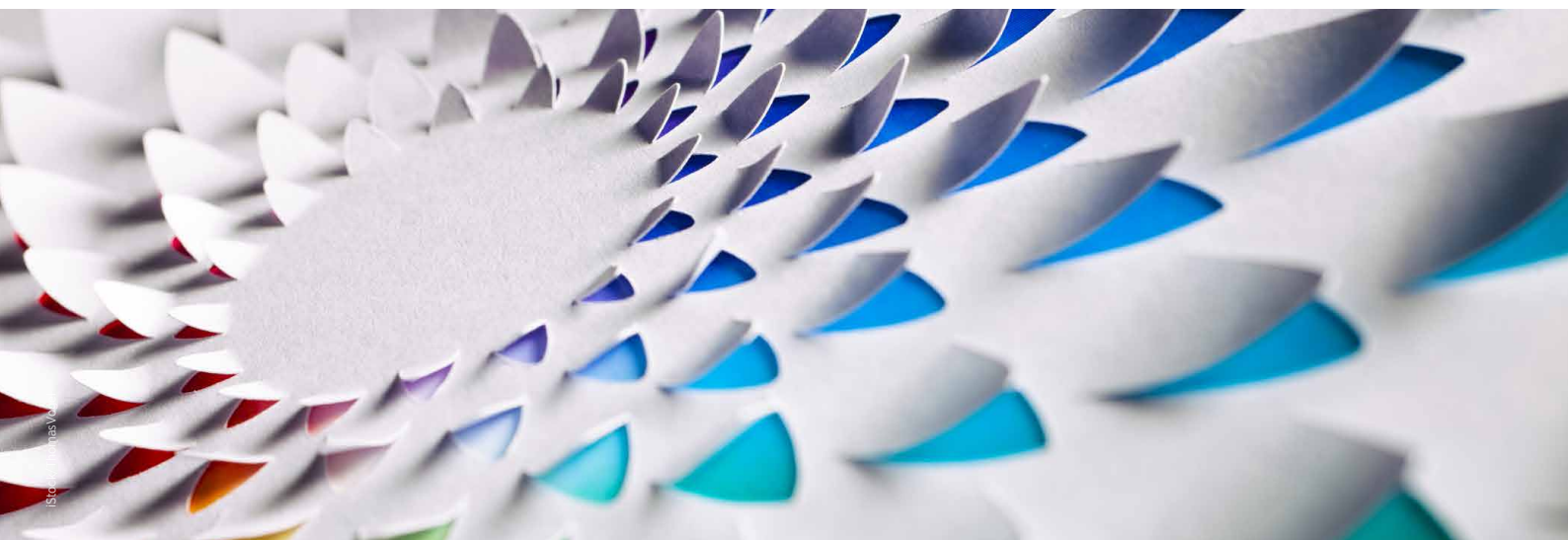
Identifying what you want to achieve with your investments is the first step in putting together your strategy. Without this goal setting, you may not make best use of your capital in the short or long term.

Setting goals

You would not start on a journey without knowing where you want to go. The same principle applies to investment planning: you need to decide what you are trying to achieve with your capital before making any investment. For example, you might want to produce a specific level of income or aim for a capital sum at a future date. Different investment objectives require different strategies.

Those objectives need to be realistic: if you want a high income, you cannot also expect similarly high capital growth. Also, you need to be comfortable with the goals you have set and stick with them until your circumstances prompt a change. If your aim is long-term capital growth, then you should not expect to outperform deposit returns every month. Goals should not be changed retrospectively any more than investments can be made with the benefit of hindsight. Instead, new goals can be set during a review.

At the goal setting stage, you also need to consider whether there are any ethical considerations you wish to place on your investments. The environmental, social and governance (ESG) aspects of investment have become increasingly relevant to individual and institutional investors. As at April 2022, there was £86.0 billion invested in UK responsible investment retail funds according to the Investment Association (IA).

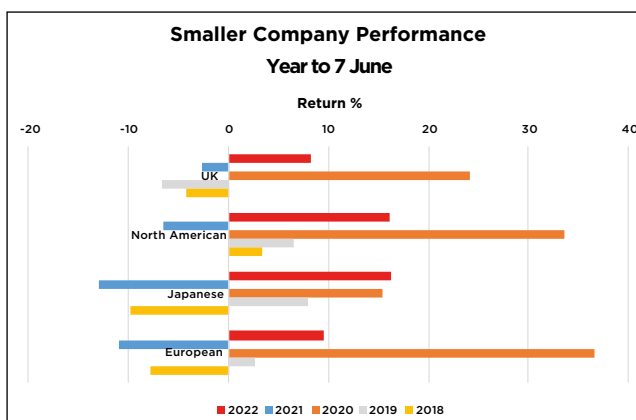


Risk tolerance and capacity

In considering risk at the personal level, there are two thresholds that must be assessed:

- 1. The level of risk you are prepared to accept.** The assessment of your risk tolerance is now usually carried out with the help of a series of profiling questions, which may be in the form of a computerised questionnaire.
- 2. The level of capital loss that your finances can absorb.** You may feel comfortable about taking a high-risk approach to your investments, but that does not automatically mean you should invest in volatile assets. The greater the risk, the greater the possibility of a substantial loss. Unless you have sufficient resources to cope with potential significant loss, you should not expose yourself to the risk. Your adviser will assess your loss capacity, based on a detailed analysis of your assets and liabilities through the investment term. The result of that exercise could mean your recommended portfolio has a lower level of risk than your attitude to risk alone suggests would be appropriate.

Planning point
 Investment markets can be very volatile, especially in the short term. There are no guarantees a high-performing fund will repeat its success in the future.



Source: Trustnet 8 June 2022

ASSET ALLOCATION

There is considerable academic research to show that asset allocation is a crucial factor in determining overall investment returns. This is demonstrated by IA sector fund performance over various terms. The table below shows results across five calendar years.

Asset allocation is not just about picking asset sectors. As the table shows, the top sectors are often at the more volatile, higher end of the risk scale such as emerging markets and smaller companies. The volatility of smaller company performance is demonstrated in the chart.

The asset allocation decision is especially important in the management of risk. Diversifying across different asset classes, such as UK shares, foreign shares, fixed interest securities, property and commodities, can reduce your investment portfolio's volatility. What is bad news for one asset class might be good news for another.

For example, a jump in inflation, such as we have recently experienced, can be negative for fixed interest securities, but it may be positive for index-linked government bonds. The same can hold true for individual shares. For instance, the impact of travel restrictions because of the Covid-19 pandemic

IA sector performance				
Year	Best performing sector	Average fund	Worst performing sector	Top fund
2021	India/Indian subcontinent	+28.3%	Latin America	-5.4%
2020	Technology and telecommunications	+44.4%	Latin America	-7.0%
2019	Technology and telecommunications	+31.0%	UK direct property	+6.3%
2018	Healthcare	+7.1%	European smaller companies	-5.1%
2017	China/Greater China	+35.9%	USD Government Bond	+1.1%

Return figures are calculated on a bid price to bid price basis (mid to mid for open-ended investment companies (OEICs)) with net income reinvested. Source: Trustnet.com. 1 January 2022. Past performance is not a guide to the amount you will receive in the future.

hit the share prices of airlines such as easyJet, but was better news for the technology companies, such as Microsoft, that benefited from homeworking.

An example of the differing fortunes of two main UK asset classes – equities and government bonds (gilts) – is shown in the graph below. In most years, both asset classes have moved in much the same direction, if not to the same degree, but there have been notable exceptions. This was particularly the case during the financial crisis of 2008 to 2009 when first gilts outperformed strongly and then, in the following year, equities did so. In 2020, the Covid-19 pandemic had a similar effect, with government bonds rising in value while shares fell sharply. However, in 2021 the picture was reversed, with equities showing strong performance and gilts, hit by rising inflation, producing a loss over the year.

The process of matching asset allocation to your risk profile and investment goals is now one that can rely on computing power. This allows a portfolio to be constructed that takes account of historic performance relationships or correlations between asset classes. As the graph above shows, gilts and equities often move in the opposite direction – a negative correlation. Therefore, a 50/50 combination of equities and gilts frequently produces more stable returns than either class alone. In the five years to the end of 2021, the 50/50 mix provided a return close to that of equities with lower volatility than either of the two classes.

Planning point

A diverse investment portfolio can help mitigate the risks of volatility in individual sectors.



HOW TO PICK AN INVESTMENT FUND

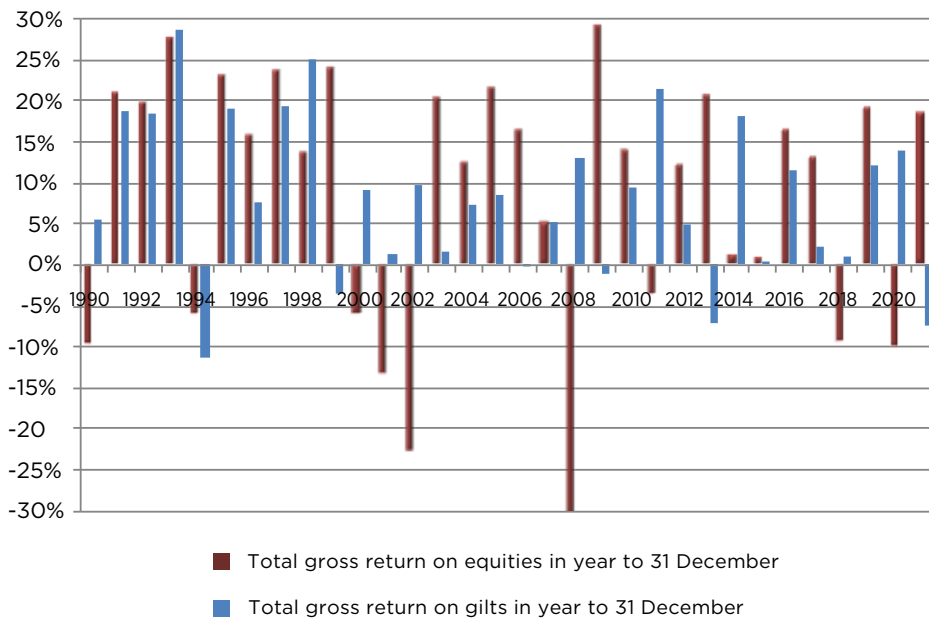
Once the asset allocation has been set, the next decision is how to invest in the selected asset classes. For most private investors, that will mean using collective funds, such as unit trusts and open-ended investment companies (OEICs). The direct purchase of assets may not make sense because of the

Smoothing returns

Year	Equities	Gilts	50/50 mix
2017	12.9%	2.2%	7.6%
2018	-9.1%	1.0%	-4.1%
2019	19.2%	12.0%	15.6%
2020	-9.8%	13.9%	2.1%
2021	18.3%	-7.3%	5.5%
Average total return	5.48%	4.07%	5.13%

Source: Barclays Capital Equity Gilt Study/FTSE. Past performance is not a guide to the amount you will receive in the future.

UK equities versus government bonds: 1990–2021



Source: Barclays Capital Equity Gilt Study/FTSE

costs involved and/or the difficulty of achieving an adequate spread within the asset class. Even for the wealthiest private investors, collective funds may be the only option for some asset classes, such as commercial property.

Fund selection is not a simple matter of looking at a set of performance league tables and picking one of the top three. League tables only tell you what has been achieved, not how it was done, nor the likelihood of continued performance. For instance, a top-performing fund may have:

- adopted an unacceptably high-risk strategy which, as recent high-profile cases have shown, may not be immediately apparent to investors;
- performed well while the fund was small, but may now be much larger and less flexible;
- recently lost its lead manager to another investment group;
- just struck lucky. The fact is that luck can play a role in fund performance, particularly for more concentrated funds that have few relatively large holdings.

The uncertainties about future fund performance have prompted the increased use of index-tracking funds. They are often called 'passive' funds to distinguish them from 'active' funds where decisions are made by an investment team rather than an index setter.

Proponents of active fund management argue that an index fund should deliver returns slightly below the market index it is tracking, because of the effect of charges, whereas an active fund, without index constraints, can outperform. Passive fund managers accept this point, but argue that picking next year's outperforming fund is virtually impossible and that overall, the higher costs incurred by active funds more than counter their supposed performance benefits. For both passive and active

funds, selection involves an in-depth analysis of a variety of performance statistics. But it also requires a qualitative assessment of the fund manager. Even funds tracking the same index have differing returns. For active fund selection, it is also necessary to investigate the manager's investment process.

Planning point

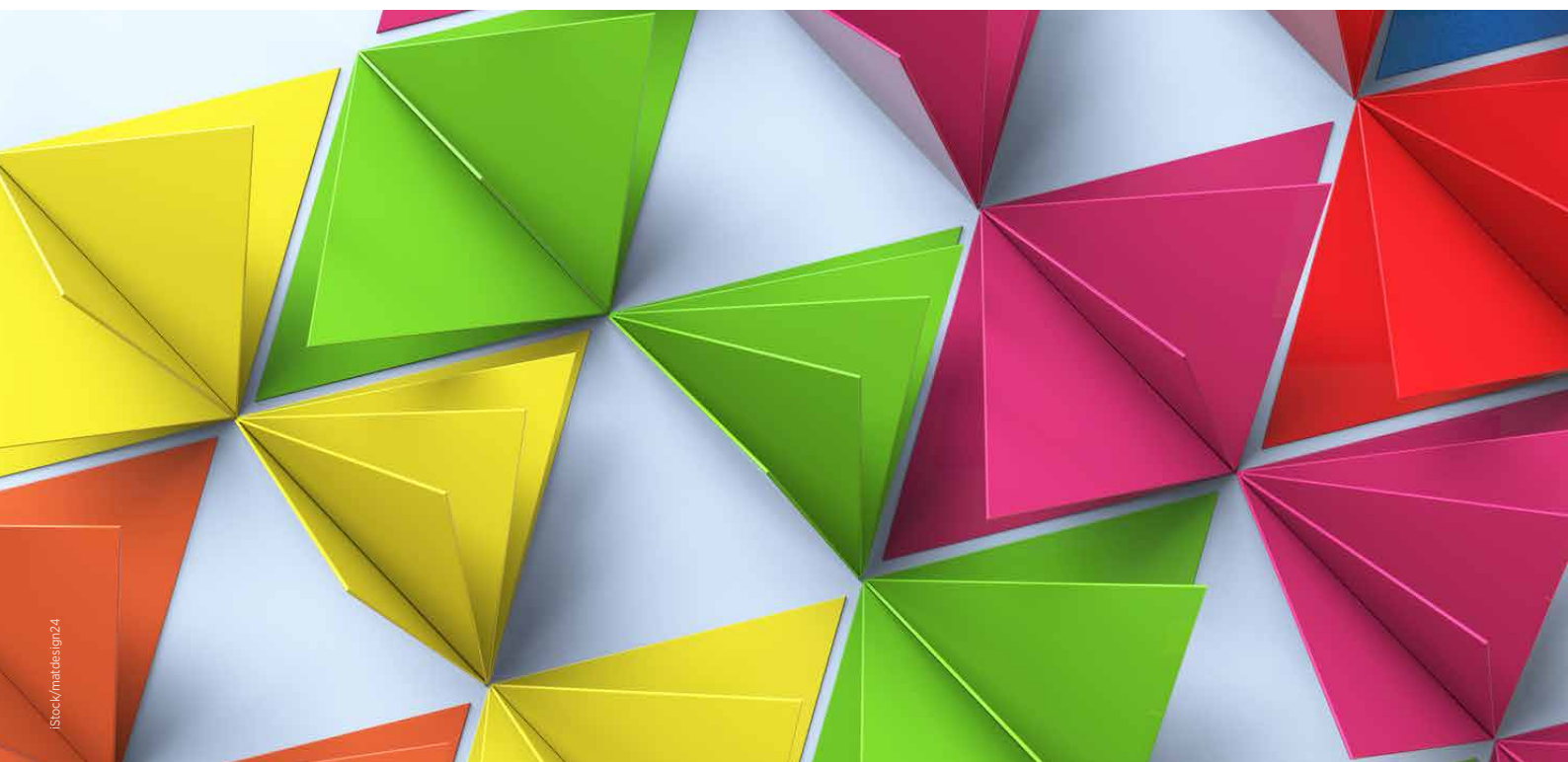
There is a wealth of information on fund performance available to investors. With some research you can build a greater understanding of how and why a fund may succeed.

TAX STRUCTURE DECISION

Tax is not always directly relevant to the design of an investment portfolio and should never dictate an investment decision. If tax saving is the sole motivation for your investment, then warning bells should sound. History is littered with tax-efficient, loss-making investment schemes. However, once the choice of asset classes and funds has been made, your personal tax position does become relevant in determining the structure - sometimes referred to as a 'wrapper' - in which you should hold the investments. For instance, you could hold the same investment fund directly, or in an individual savings account (ISA), or in a self-invested personal pension (SIPP) or in an investment bond.

The tax consequences of each option are different. There are two layers of tax treatment to consider, within the chosen investment wrapper, and then your personal position when you take withdrawals from it - unless you choose to hold the investments directly.

The use of a variety of wrappers need not add great complexity to the management of your portfolio, as we explain in the next section. Some investments are better suited to



being held in tax wrappers rather than directly. For example, income from fixed-interest funds is free of UK tax in an ISA, but currently taxed at rates of up to 45% if held personally.

PLATFORM SELECTION

The construction and management of fund-based investment portfolios is now largely undertaken using investment platforms. At its simplest, an investment platform provides a means of assembling and administering a spread of different funds from a range of investment managers, which can be held in a variety of tax structures.

The number of platform providers has grown as investment administration strategies have changed, although there have also been some disappearances. Your adviser will consider a range of factors when recommending a platform to you, including:

- choice of funds and investment managers – generally the more the better;
- range of tax structures available;
- provider's record for administrative efficiency;
- level of fees charged and their collection method; and
- financial strength of the platform provider.

Planning point

Your investment plan needs to be dynamic and respond to changes in performance and values, as well as your requirements. So, you should regularly review your portfolio.

REVIEWING YOUR PORTFOLIO

The selection of the platform providers is the final step before the creation of your investment portfolio, but it is by no means the end of the process. Your investment plan should never be fixed or incapable of change. It needs to be regularly reviewed to check that both the asset allocation and chosen investments are still appropriate to your financial goals and that those goals have not altered.

A review that makes no changes is rare. For example, to maintain the original asset allocation there will often be a need to rebalance holdings because of intervening moves in investment values. At the fund level, manager changes, revised fund objectives or disappointing performance can all prompt adjustments. New investment opportunities also need to be considered.

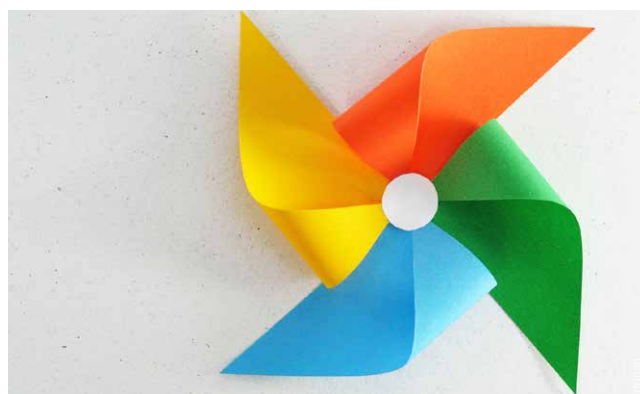
If your portfolio is not subject to regular and systematic reviews, it may soon become just a random collection of investments rather than a coherent portfolio. The discipline of a regular review is therefore a key component of successful investment planning.

The value of investments and the income they produce can fall as well as rise. You may get back less than you invested.

Past performance is not a reliable indicator of future performance.

Investing in shares should be regarded as a long-term investment and should fit in with your overall attitude to risk and your financial circumstances.

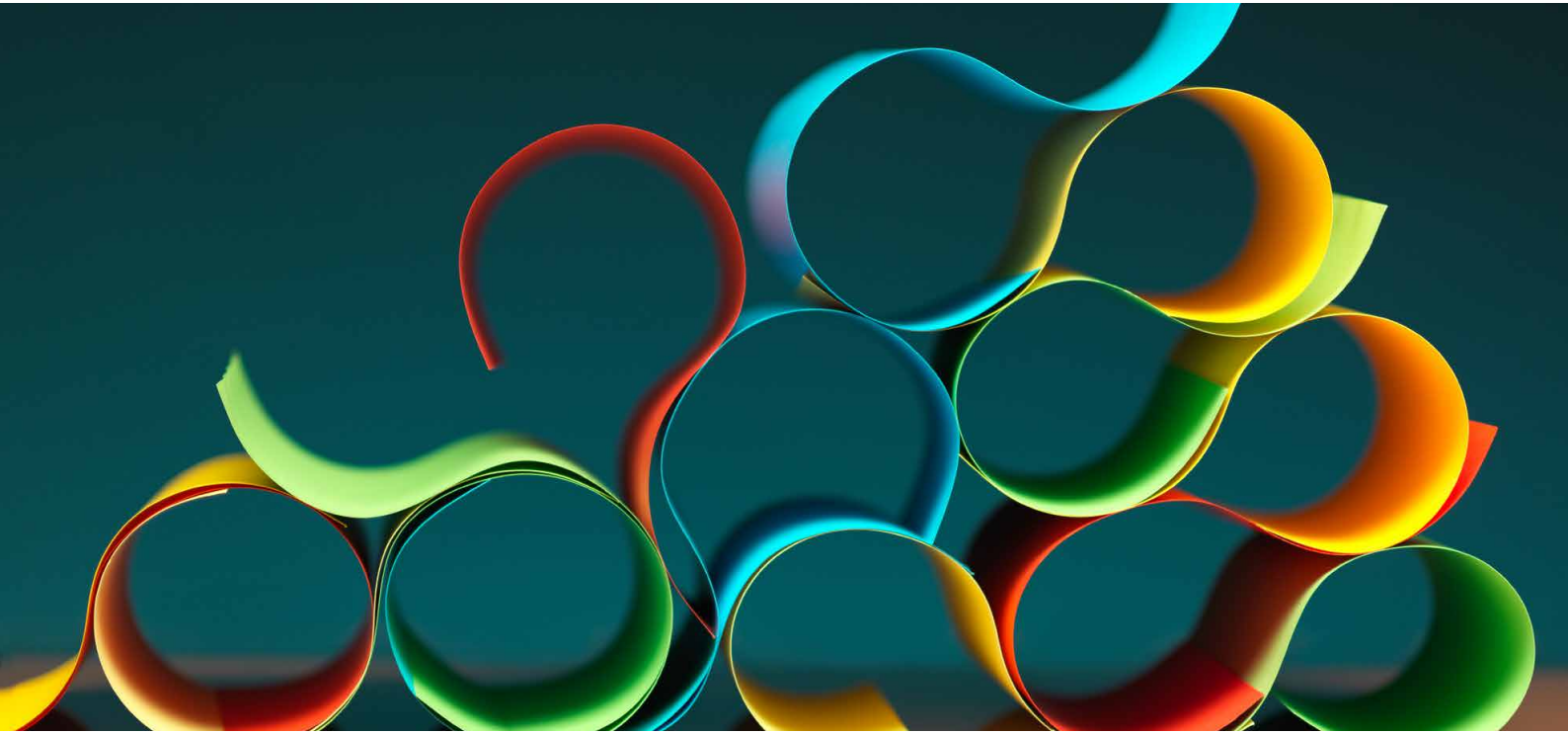
Tax planning is not regulated by the Financial Conduct Authority.



HOW WE CAN HELP

We can help with your investment planning and asset allocation in several ways:

- Obtain up-to-date valuations, acquisition dates and initial outlay for your existing investments, including pension plans and any investment-linked life assurance. This gives a clear picture of your starting point.
- Guide you through the setting of your investment goals, helping you to consider how much risk you are willing to accept and the level of potential loss that you can tolerate.
- Recommend appropriate asset allocations, fund and platform providers, drawing on our extensive market knowledge.
- Undertake reviews of your plan to keep it on track with your investment goals.
- Keep you advised on how any new government legislation could affect your investments.



rosan helmsley
WEALTH MANAGEMENT

Rosan Helmsley Ltd, 1000 Cathedral Square,
Cathedral Hill, Guildford, Surrey, GU2 7YL

01483 90 40 40 | www.rosan-ifa.com

Rosan Helmsley Ltd is authorised and regulated by the Financial Conduct Authority (FCA).